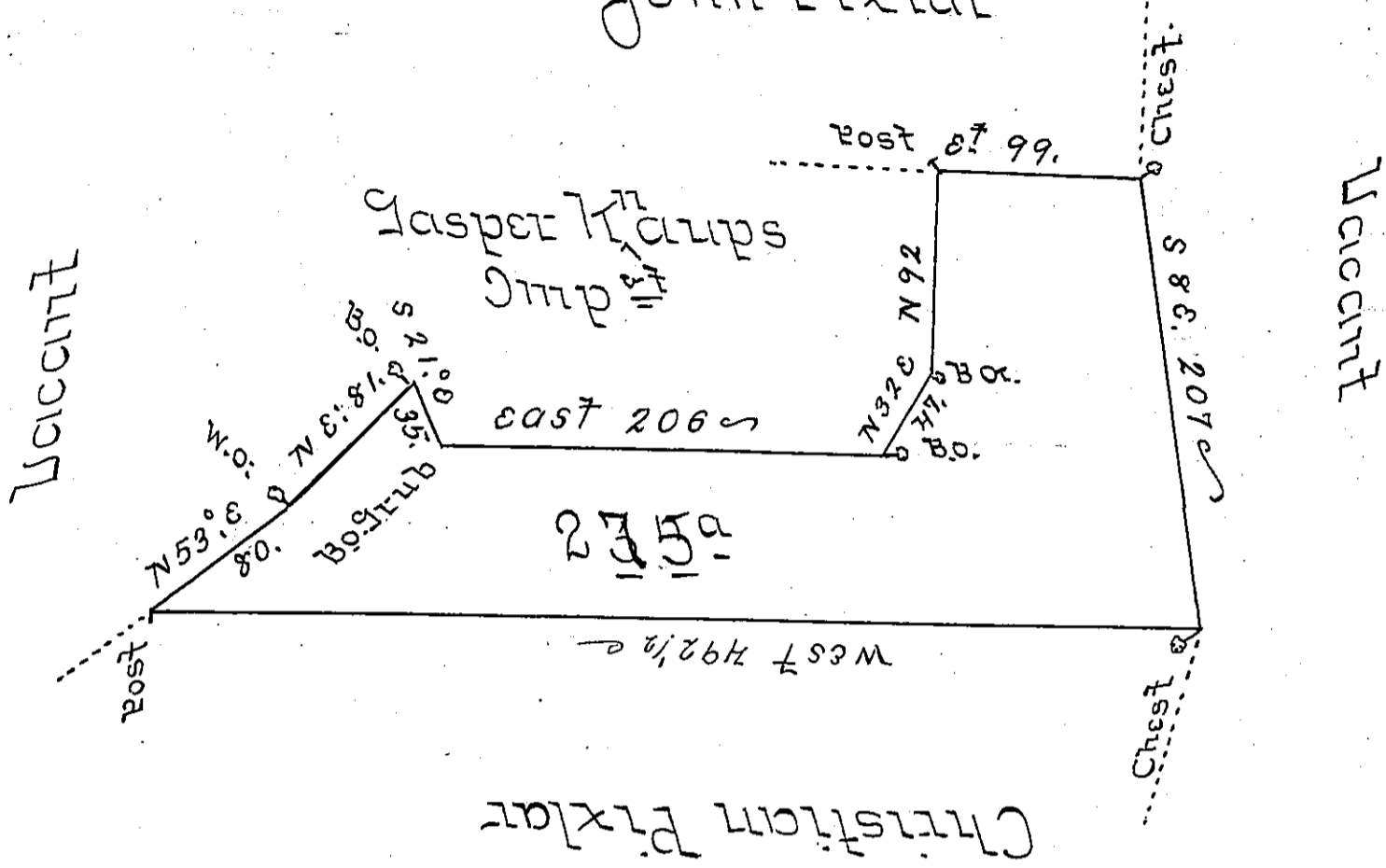


John Pixlar



Survey'd to Jacob Neave on the 1st July 1763 the
 above described tract of Two Hundred & ~~seventy five~~
 Acres and Allow^{ce} of 6 PC^t situate in Manchester
 Township York County - By Warrant of the Ele-
 venth Day of June 1763 -

P-Bontram Galbraith D.S.

To Jn^o Lukens Esq^r }
 Survey Gen^l - }

IN TESTIMONY that the above is a copy of the original remaining on file in
 the Department of Internal Affairs of Pennsylvania, made
 conformably to an Act of Assembly approved the 16th day of
 February, 1833, I have hereunto set my Hand and caused
 the Seal of said Department to be affixed at Harrisburg,
 this twenty seventh day of February 1906.

Grace R. Brown
 Secretary of Internal Affairs.